



May 7, 2018

ENGINEERS WITHOUT BORDERS USA

Southern Illinois University Carbondale Chapter

ASSESSMENT TRIP UPDATE

It's official! Our Assessment Trip is May 15 through May 22 in Jancko Marca, Bolivia. We are partnering with our non-governmental organization (NGO) Engineers in Action (EIA) to provide a sustainable and clean water source that Jancko Marca can use year-round, as the community there has a lack of water during the dry season from April to October. For a bit of background, the purpose of the Assessment Trip is to evaluate whether or not the proposed project can be executed as well as to collect both technical data and information from the people themselves about the problem. On this trip, our Travel Team will be land surveying, collecting water samples, and having meetings with community leaders and the members.



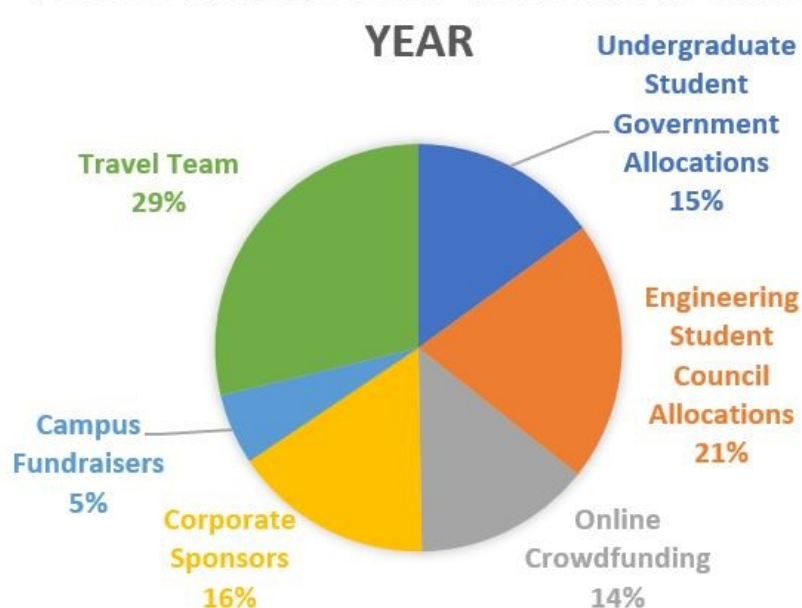
Pictured: Clair Bammann (left), Jess Kurpius (middle), and Tom Bryant (right) practicing with the land surveying equipment.

To prepare for the trip, our traveling members have been practicing land surveying and water testing to maximize their time once they are in-country. A big thank you to Tom Bryant from Seiler Instrument Geospatial Division for coming out to train our team on how to use the land surveying equipment, and for donating a Trimble data collector to be used in conjunction with the Nikon Total Station we are borrowing from SIU.

Also, another big thank you to Kim Cole from the City of Carbondale Public Treatment Works for donating us bottles to collect water samples in, and for offering testing services of the samples we bring back. We will also have some time sensitive water testing done at a university in La Paz, Bolivia.

FUNDRAISING BREAKDOWN

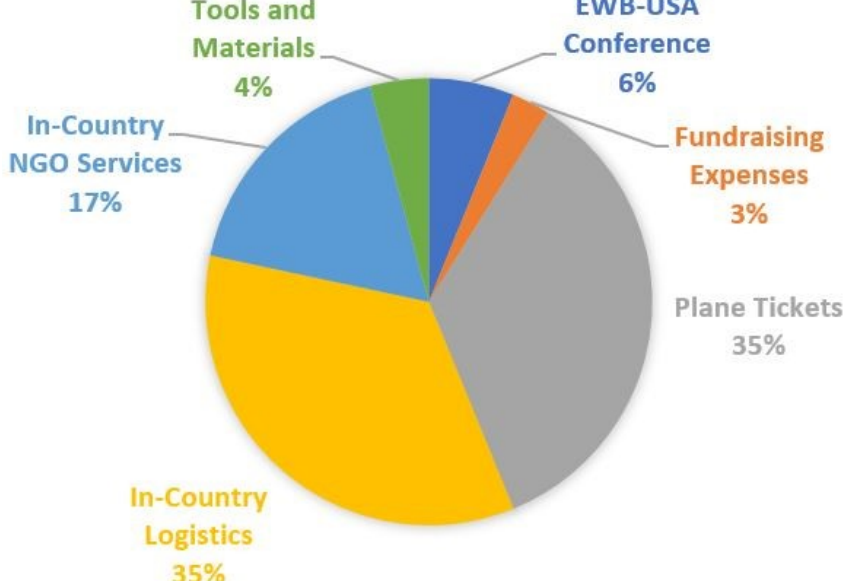
FUNDS RAISED 2017-2018 ACADEMIC YEAR



This pie chart is a breakdown of all of the funds we have raised/received throughout the past year, totaling \$14,503.42:

- **USG and ESC (\$5173.50):** Allocations that we received from Undergraduate Student Government and Engineering Student Council specifically for this Assessment Trip
- **Online Crowdfunding (\$2040.92):** Donations to our crowdfunding page through Classy
- **Corporate Sponsors (\$2300):** Monetary donations from Spartan Light Metal Products, Larson Engineering, and Nucor
- **Campus Fundraisers (\$816):** Local fundraising our chapter has done through weekly bake sales in the spring semester, a Pancake Breakfast event in the fall semester, and restaurant fundraisers at Pagliai's Pizza and Panda Express
- **Travel Team (\$4173):** Funds that the travel team members have either donated personally or raised through individual Classy pages

EXPENSES 2017-2018 ACADEMIC YEAR



This pie chart is a breakdown of what we have spent our funds on this academic year, totaling \$9386.91:

- **EWB-USA Conference (\$580):** Sent two members and a mentor to connect with other nearby chapters and learn valuable information from other projects that have been completed in the past
- **Fundraiser Start-Up Costs (\$232.16):** Money spent on the Pancake Breakfast fundraiser and for a banner
- **Plane Tickets (\$3285):** Plane tickets to travel to Bolivia and back this May
- **In-Country Logistics (\$3249.75):** Services that our partner Engineers In Action will be paid for providing including a driver, translator, cook, Engineer in the field, etc.
- **In-Country NGO Services (\$1640):** An Assessment Trip fee from EIA and fees to pay our EIA Project Manager for the week
- **Tools and Materials (\$400):** Equipment/services that will be used during the trip including water testing at a University in La Paz as well as other basics like batteries and nitrate packets

MEET THE TRAVEL TEAM



Clair Bammann:

Clair is a third-year civil engineering student and the Project Lead of the team. This semester, she has been responsible for planning the trip, organizing communication between mentors, NGOs, and the chapter and training the travel team on the equipment they will be using while in country. She joined EWB because she wants to use her knowledge and education to solve problems around the world.

Victoria Steinberg:

Victoria is a fourth year Mechanical Engineering and International Studies major. She is traveling this May as the team's Planning, Monitoring, Evaluation, and Learning Lead. For her, EWB is a way to give back by applying engineering skills in a global context.

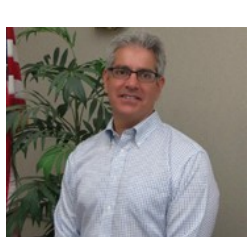
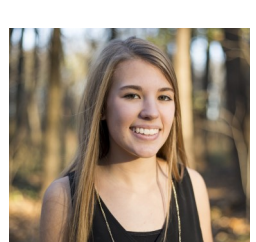


Ingrid Acevedo:

Ingrid is a junior at SIU, currently studying Civil Engineering with a specialization in Environmental Engineering. Her role within EWB-SIUC is the Public Coordinator. By being part of EWB she wishes to further her education by experiencing projects such as this upcoming trip to Jancko Marca, Bolivia. It will be a good opportunity for her to travel in order to better understand people within their culture and how they respond to their current situation, but most importantly to see how we are able to help them with their water issues.

Jess Kurpius:

Jess is a Freshman at SIU majoring in Civil Engineering. She joined EWB in the fall when she first heard about the water project. As a member of the travel team and one of the Health and Safety Officers, she can't wait to use the skills she is learning in class for a project with such a great purpose!



Michael Gartenberg:

Michael has served as Principal of Gartenberg Construction Consulting as well as an Affiliate Professor in the Master of Construction Management Degree Program at Washington University. He has served as the Director of Engineering and Facilities of the St. Louis Zoological Park and Building Commissioner, Director of Public Works and City Engineer for St. Louis area municipalities. For 35+ years, he's held leadership roles with various local non-for-profit organizations. EWB-SIUC Chapter provides the structure for Michael to help serve basic and humanitarian needs of people less fortunate than those of us living in the US.

Jale Tezcan:

Jale is a professor at the Department of Civil and Environmental Engineering, serving as the Faculty Mentor for the SIUC Student Chapter of EWB-USA. She says, "As engineers, we are preoccupied with the technical aspects of engineering problems and their solutions, rarely interacting with the intended recipients of our services. Being involved in EWB provides a rare exception, where the potential users take an active role in every stage of the project. It is a great learning experience for both students and mentors."



CONTACT US

ewbsiuc@siu.edu

<http://ewb.rso.siu.edu>

President: Madeline Buckley Vice President: Garrett Watts Treasurer: Brittany Webb

Project Lead: Clair Bammann Secretary: Jessica Kurpius

DONATE



Larson Engineering



SPARTAN

Light Metal Products

