

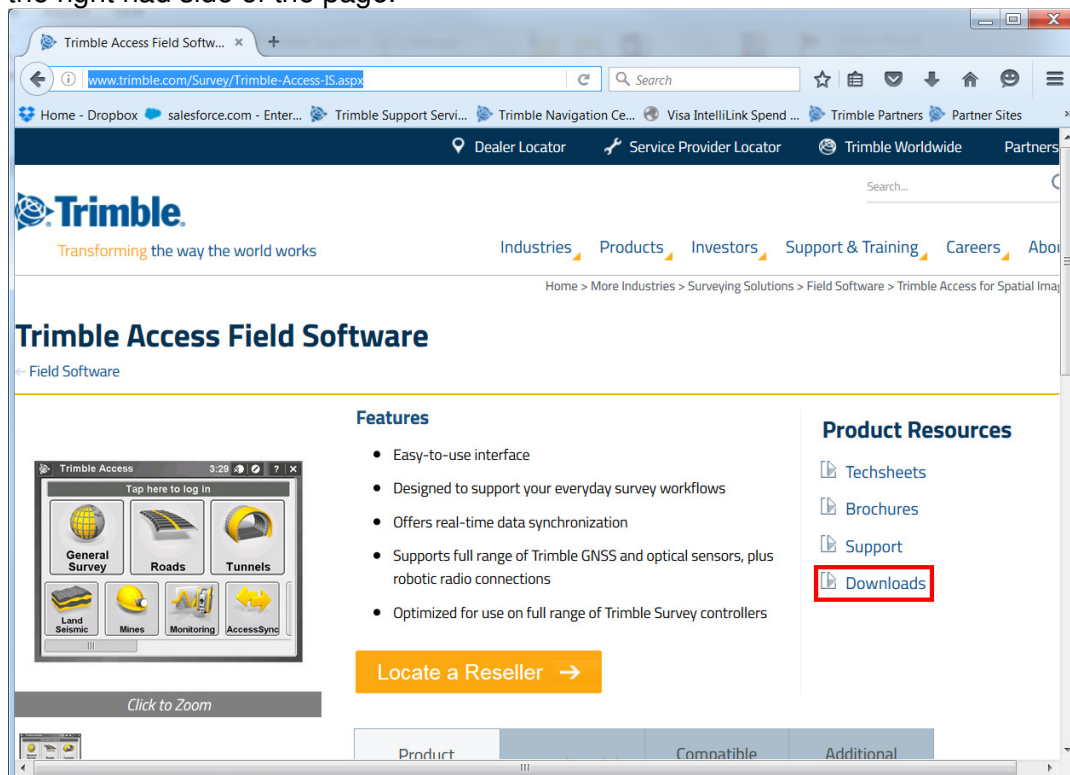
Trimble ASCII File Generator Utility

Overview: Learn how to use the Trimble ASCII File Generator Utility Program

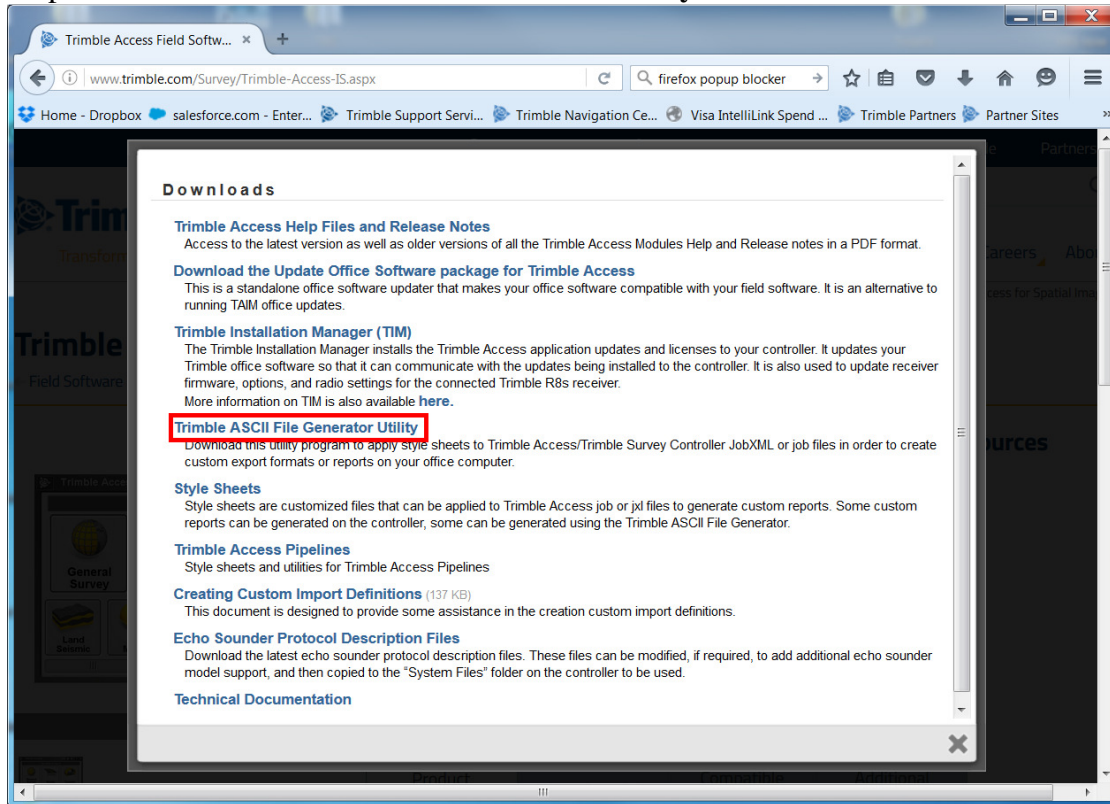
Equipment: Computer

Results: Allows user to apply style sheets to Trimble Access/Trimble Survey Controller JobXML or job files in order to create custom export formats or reports on your office computer.

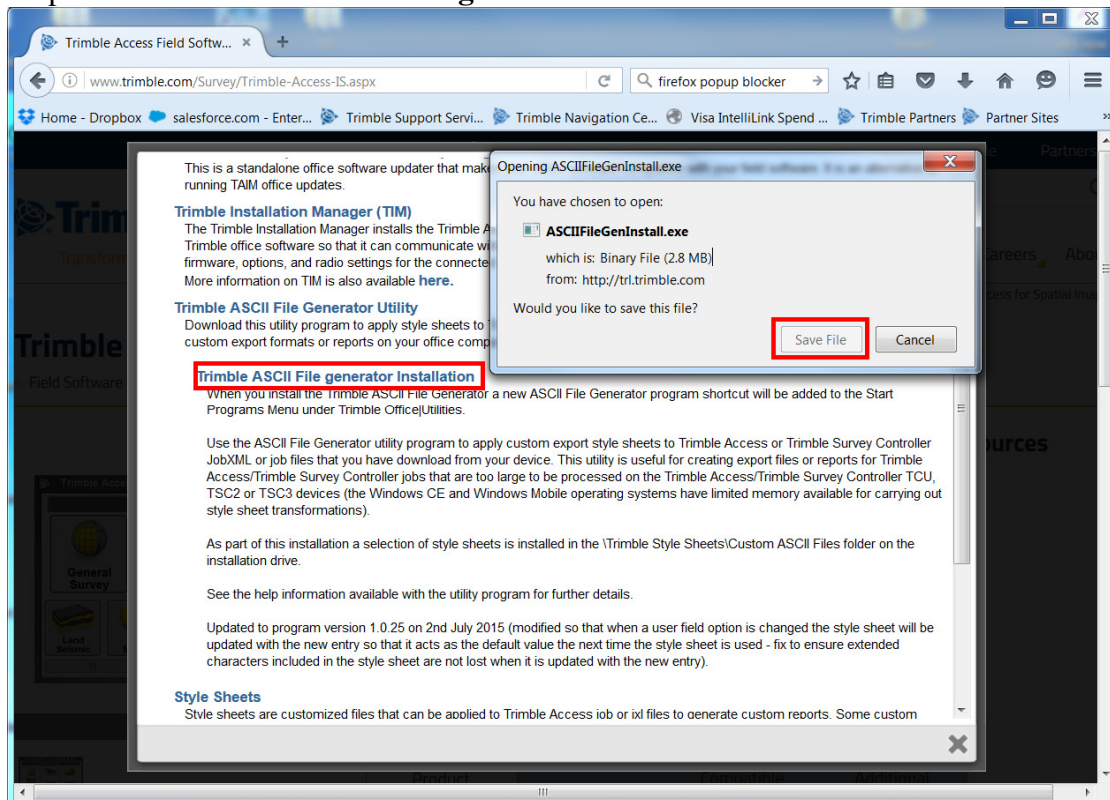
Procedure: Step 1: From your computer, open a web browser (Internet Explorer, Chrome, Firefox) and go to <http://www.trimble.com/Survey/Trimble-Access-IS.aspx> Click on **Downloads** on the right had side of the page.



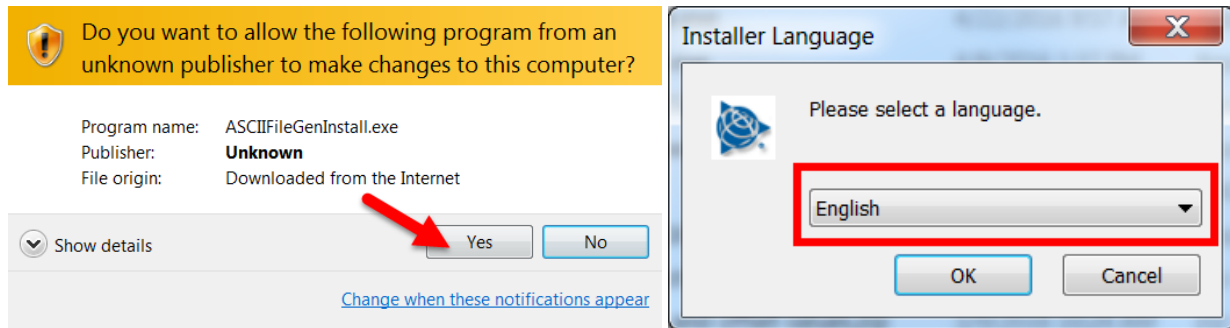
Step 2: Click **Trimble ASCII File Generator Utility**.



Step 3: Click **Trimble ASCII File generator Installation** and Save the file.

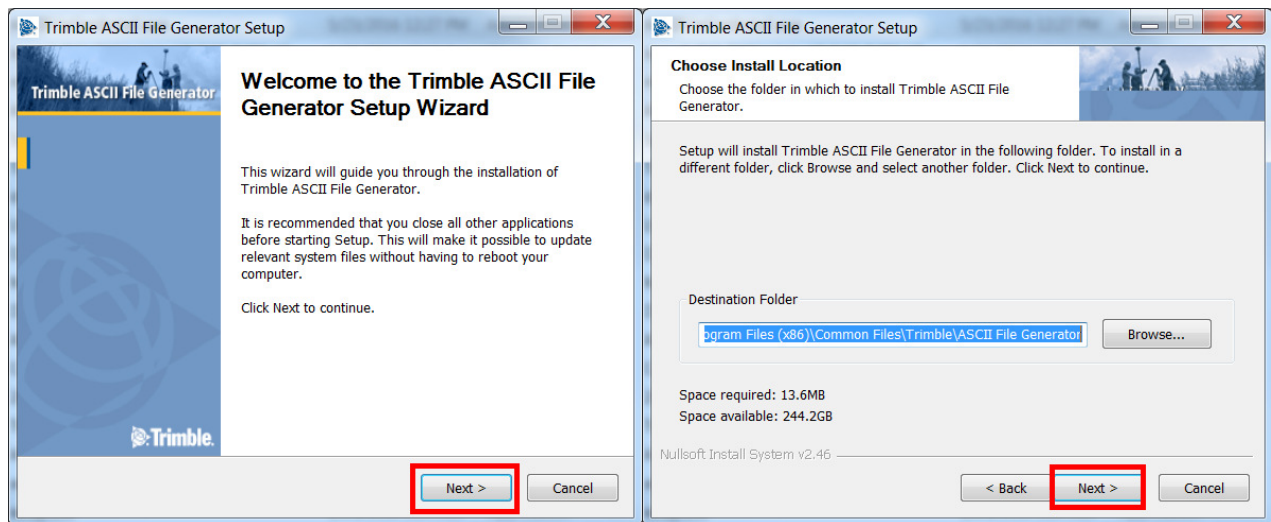


Step 4: Open the folder the download was saved in and double click on **ASCIIFileGenInstall.exe** to install. In this example my file was saved in **C:\Users*(username)*\Downloads**. Click **Yes** on any prompt that may pop up asking you to make changes to the computer. And select the Language you want to install.



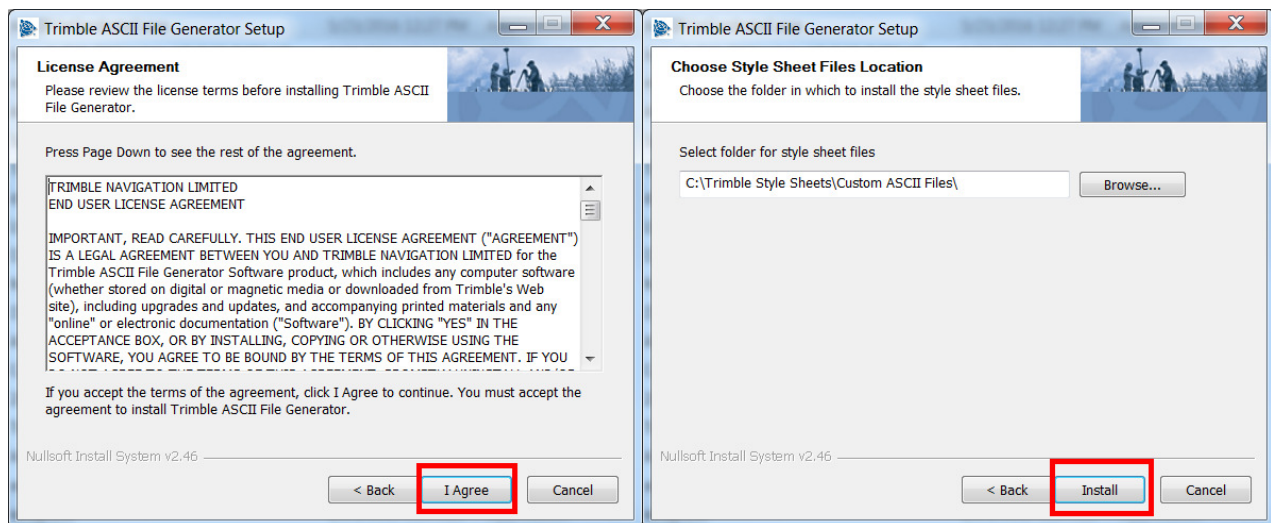
Step 5: On the Welcome Screen hit **Next**.

Step 6: On Install Location hit **Next**.

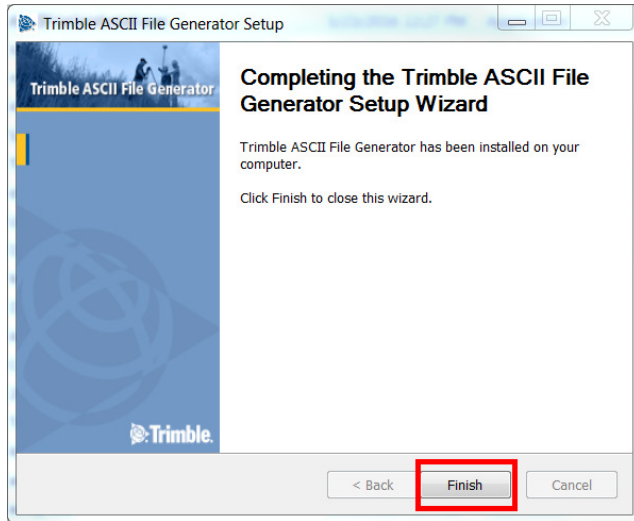


Step 7: **Agree** to the License Agreement.

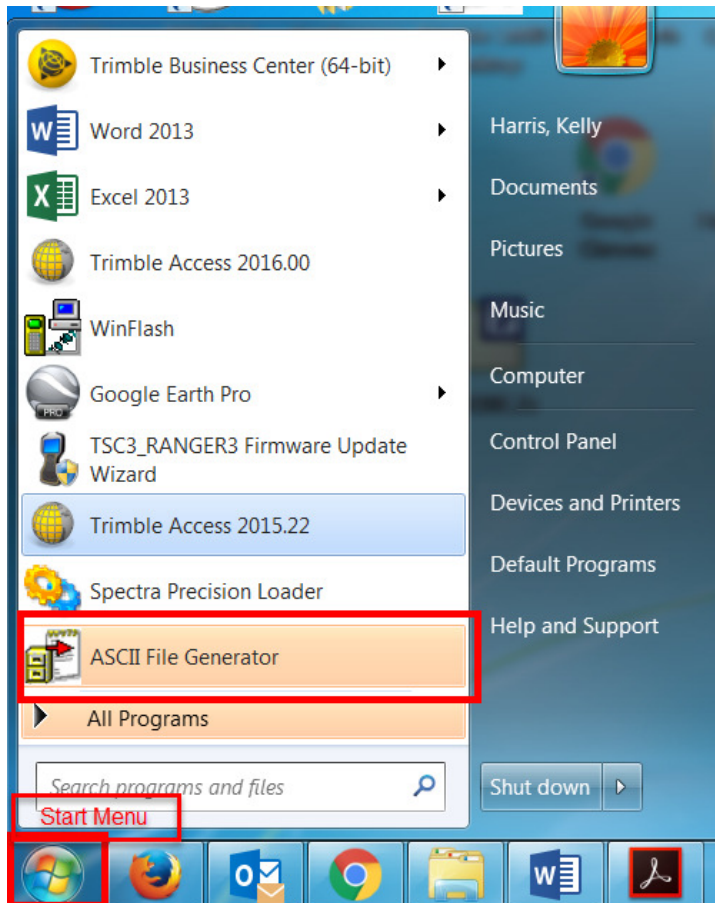
Step 8: Click **Install**



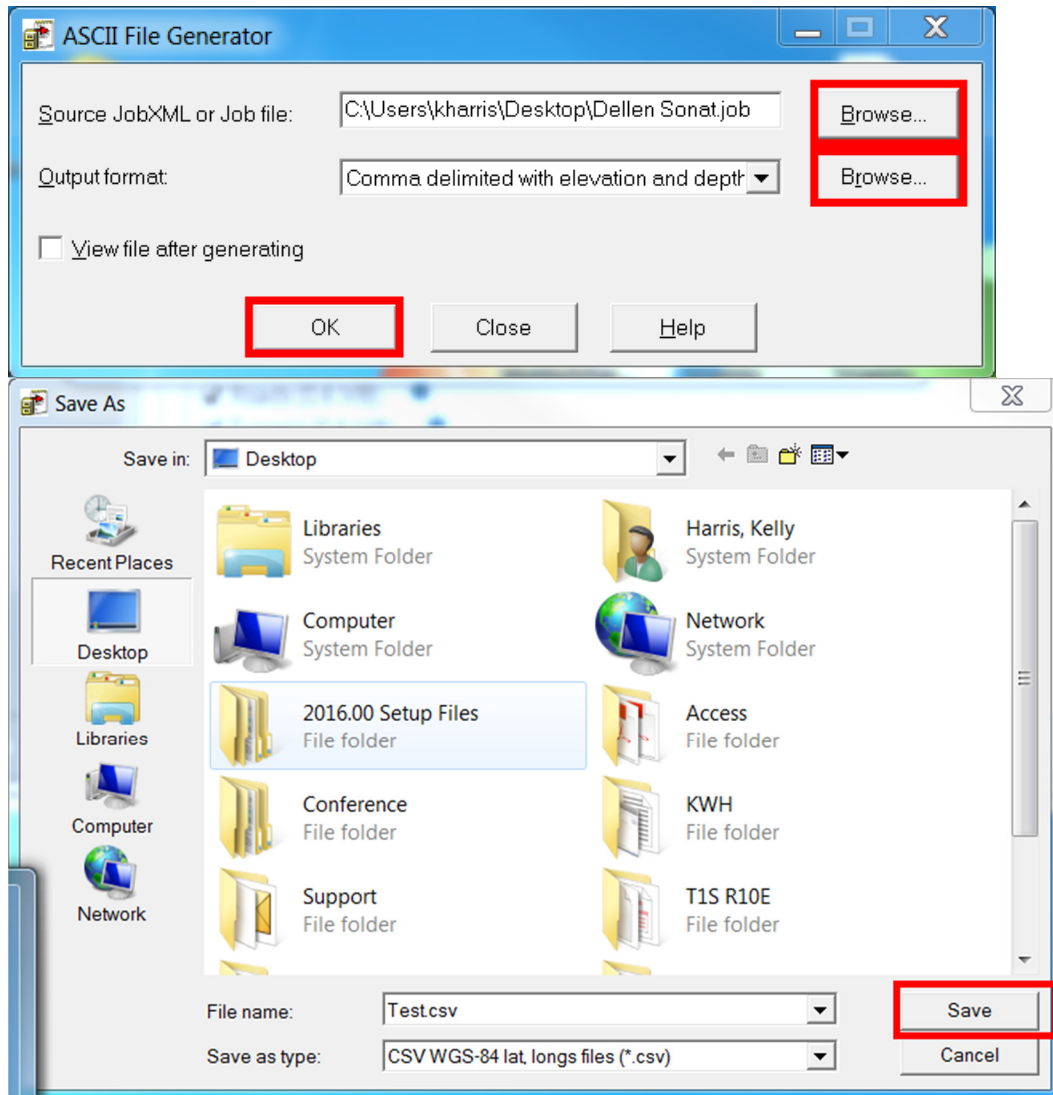
Step 9: Click **Finish**.



Step 10: ASCII File Generator Utility is now installed on your PC. Click on the **Start** menu and click on **ASCII File Generator**



Step 11: To use ASCII File Generator once opened, Browse to your .job or .jxl file on your computer or usb drive and select the Output Format style you need. Click **OK** and **Save** the file to the desired location.





Note: Depending on the **Output Format** selected in Step 11, there may be additional steps to take before the report is generated.

Additional stylesheets can be download from the Trimble website. See step 1 for the location of additional style sheets.

Below is an example for an **Output Format** of **Comma delimited with elevation and depth** that you would commonly use with a SonarMite Echosounder

	A	B	C	D	E	F	G
1	Echo sounder: SonarMite						
2	Pt name	North	East	Elevation	Depth	Code	
3	50000	1809981	385812.7	937.062	4.954	20.lb	
4	50001	1809984	385811.4	937.006	3.642	20.lb	
5	50002	1809986	385808.7	937.029	1.575	20.lb	
6	50003	1809987	385805.4	936.982		20.lb	
7	50004	1809987	385802	936.979	2.165	20.lb	
8	50005	1809987	385798.5	936.939	2.001	20.lb	
9	50006	1809987	385795.1	936.894	2.1	20.lb	
10	50007	1809987	385791.6	936.862	2.264	20.lb	
11	50008	1809987	385788.2	936.875	2.657	20.lb	
12	50009	1809987	385784.9	936.822	2.657	20.lb	
13	50010	1809987	385781.2	936.857	2.69	20.lb	
14	50011	1809986	385777.6	936.917	2.559	20.lb	
15	50012	1809986	385774.2	936.976	2.69	20.lb	
16	50013	1809986	385770.9	936.957	2.854	20.lb	
17	50014	1809986	385767.5	936.945	2.953	20.lb	
18	50015	1809986	385764.2	936.903	2.986	20.lb	
19	50016	1809985	385760.5	936.92	2.756	20.lb	